

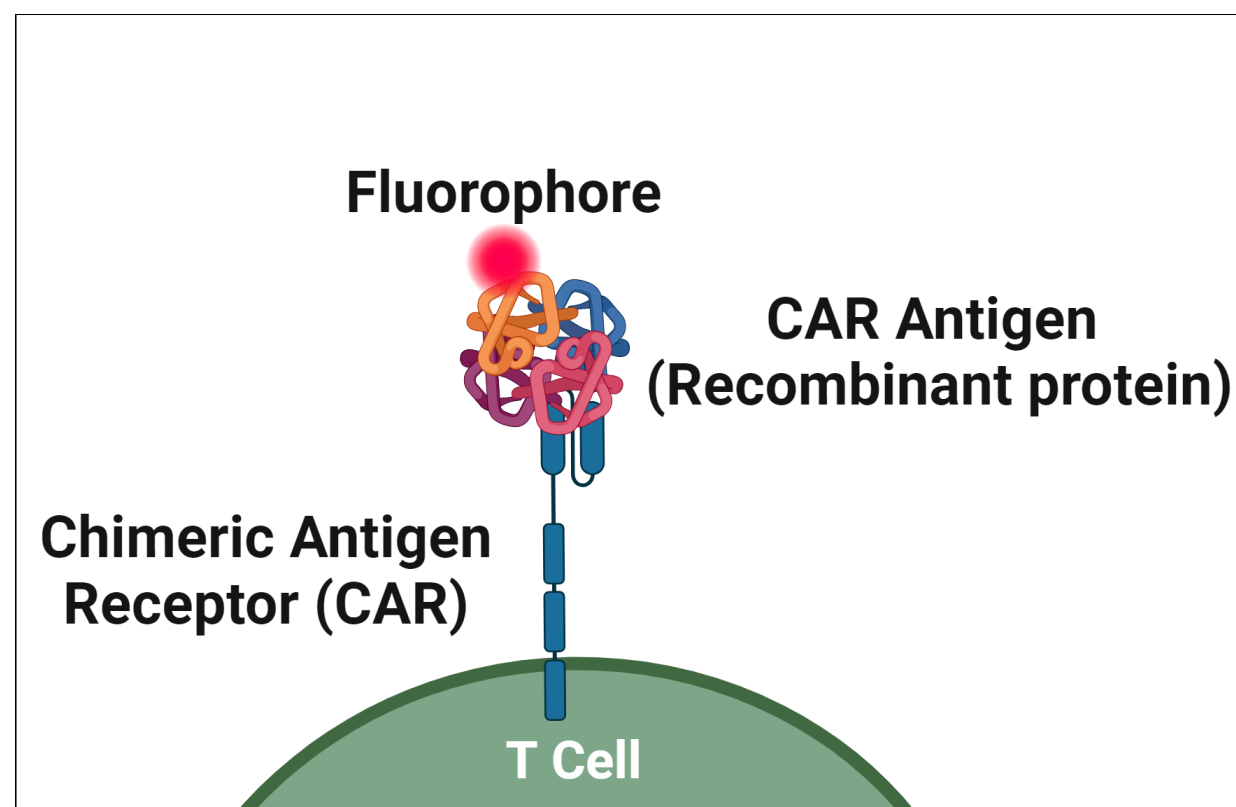
Flow Cytometry Solutions: Evaluating CAR T-Cell Expression

Chimeric antigen receptor (CAR) T-cell therapy is a rapidly evolving immunotherapy field targeting specific cancers. Evaluation of CAR protein expression is critical for CAR T research since, without proper expression, the CAR T-cells cannot function as intended to eliminate the targeted cancer cell.

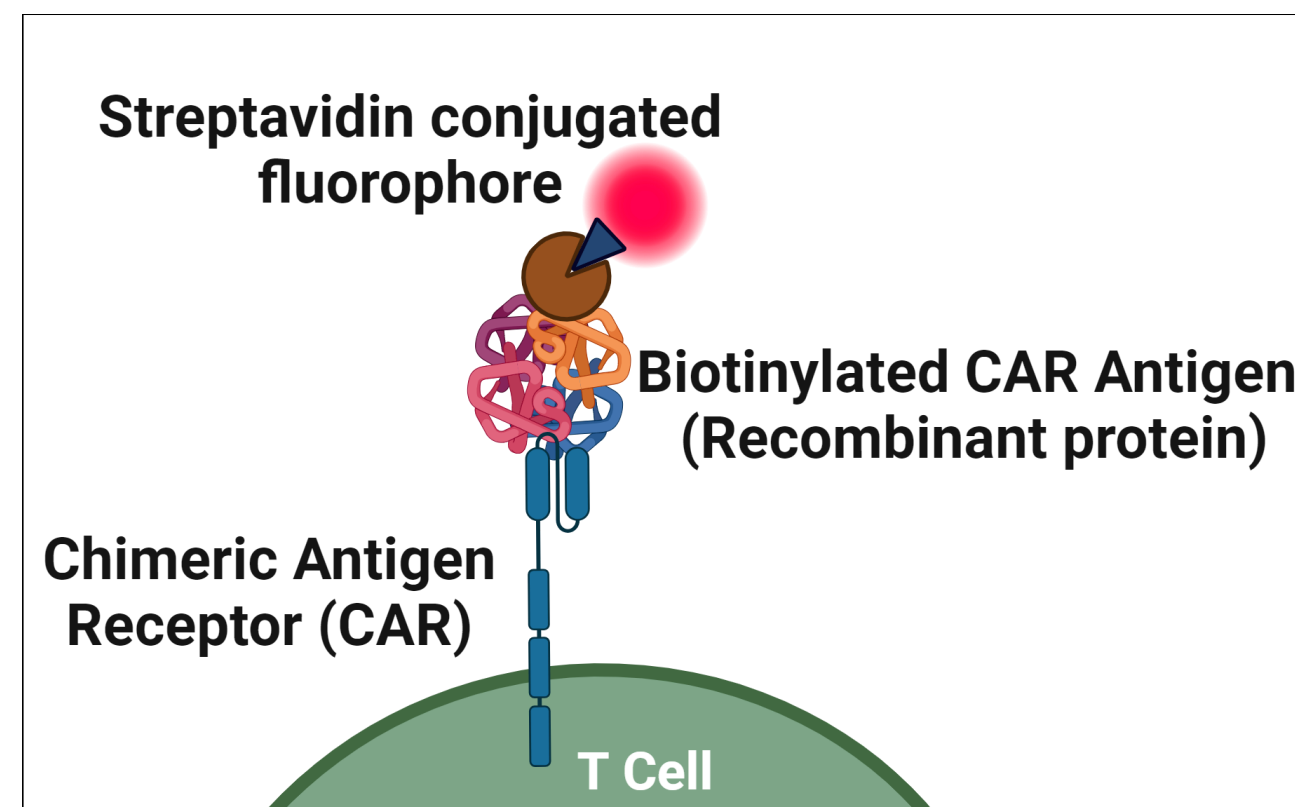
Accelerate and Simplify CAR T-Cell Expression Verification

Available flow cytometry detection options for recombinant protein (CAR antigens):

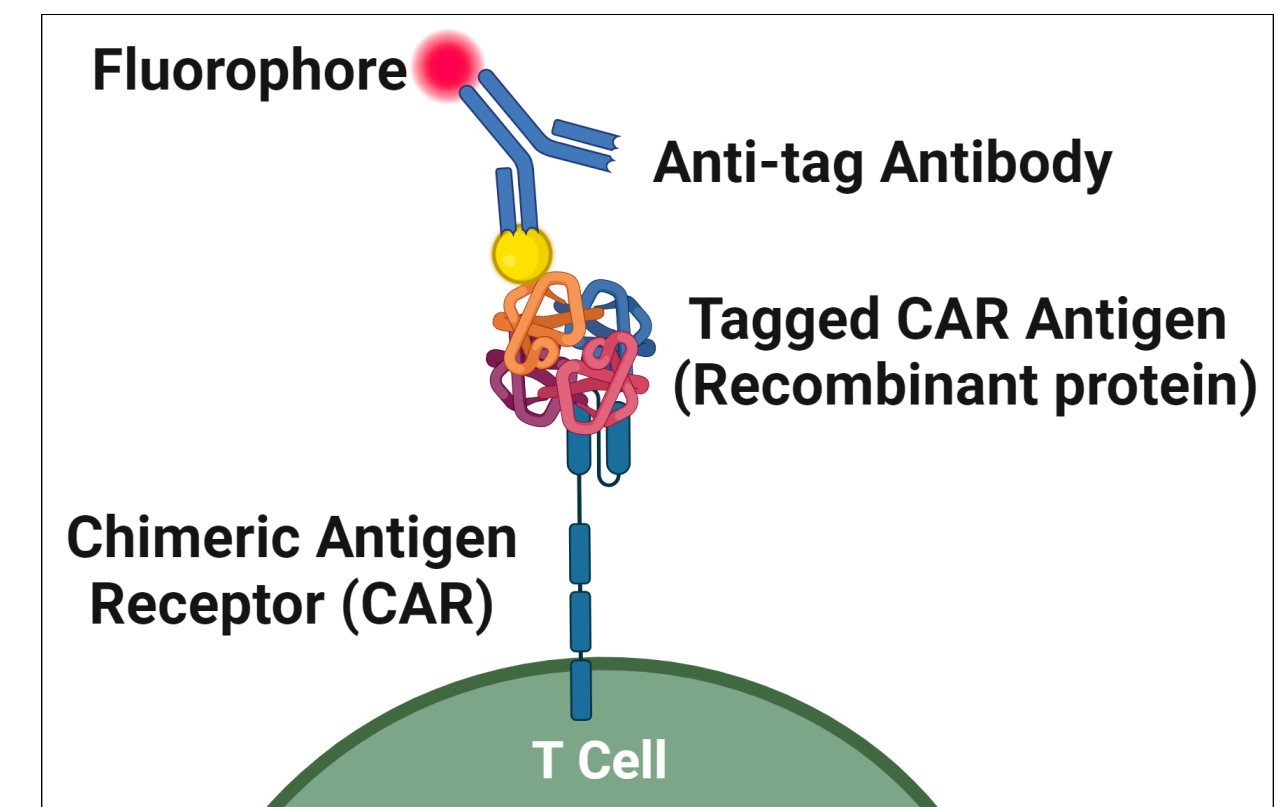
Fluorescent-labeled CAR antigen



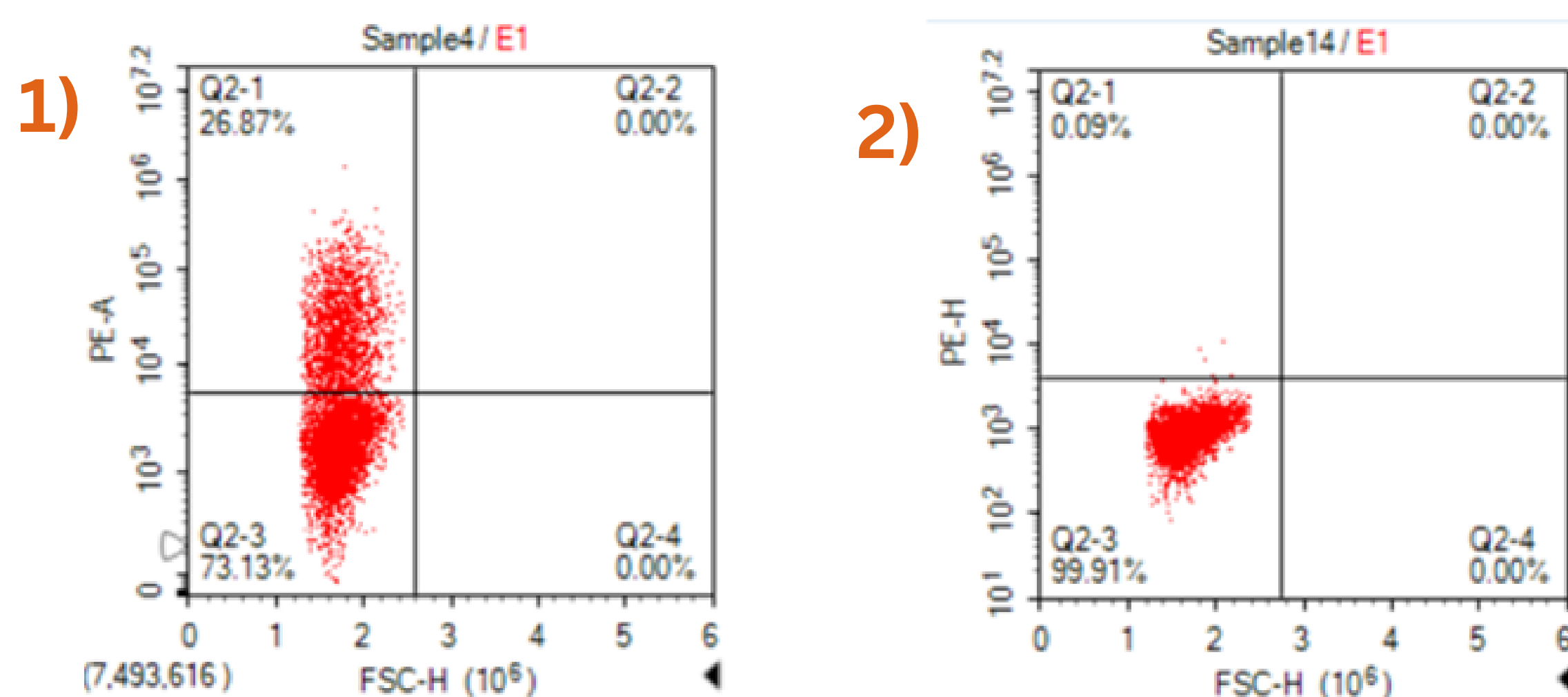
Biotinylated CAR antigen



Epitope-tagged CAR antigen



Detection of PE conjugated BCMA recombinant protein by flow cytometry



- 1) BCMA CAR transfected CHO cells
- 2) Mock-transfected CHO cells

Transfected CHO cells were strained with PE conjugated BCMA-Fc protein (TP721285) at 4.0 µg/mL for 1 hr at RT

Key CAR target antigens for hematological and solid tumors

CAR Target Antigens	PE Conjugated	APC Conjugated	Biotin Conjugated	Epitope-tagged	
	C-Fc or C-His Tag	C-Fc or C-His Tag	C-Fc-Avi or C-His-Avi Tag	C-Fc or C-His Tag	C-Fc-Avi or C-His-Avi Tag
BCMA/TNFRSF17	TP721285	TP721286	TP721284	TP721282	TP721283
CD7	TP721337	TP721338	TP721336	TP721334	TP721335
CD19	TP721367	TP721368	TP721366	TP721364	TP721365
CD22	TP721305	TP721306	TP721304	TP721302	TP721303
CD30	TP721322	TP721323	TP721321	TP721319	TP721320
CD38	TP721244	TP721245	TP721243	-	TP721242
EPCAM/TROP1	TP721352	TP721353	TP721351	TP721349	TP721350
Glypican 3/GPC3	TP721280	TP721281	TP721279	TP721277	TP721278
Her2/ERBB2	TP721317	TP721318	TP721316	TP721314	TP721315
IL13RA2	TP721327	TP721328	TP721326	TP721324	TP721325
L1CAM	TP721332	TP721333	TP721331	-	-
Mesothelin/MSLN	TP721268	TP721269	TP721267	TP721265	TP721266
PD1/PDCD1	TP721295	TP721296	TP721294	TP721292	TP721293
PD-L1/CD274	TP721257	TP721258	TP721256	TP721254	TP721255

Learn more about our CAR T research !

visit us at www.origene.com

